

Colour Chart Talens Art Creation Acrylic



Titanium white
105 +++ ■ □
PW6



Titanium buff deep
290 +++ ■ □
PW6/PY42/PBk7



Naples yellow deep
223 +++ ■ □
PY42/PW6



Naples yellow red light
292 +++ ■ □
PW6/PY42/PR101



Naples yellow red
224 ++ ■ □
PY74/PO34/PW6



Pastel yellow
226 +++ ■ □
PW6/PY74



Azo yellow lemon
267 ++ ■ □
PY3



Primary yellow
275 ++ ■ □
PY3/PY74



Azo yellow medium
269 ++ ■ □
PY74/PO34/PW6



Azo yellow deep
270 ++ ■ □
PY74/PO34



Azo orange
276 ++ ■ □
PO34/PY74



Naphthol red light
398 ++ ■ □
PR112/PY74



Naphthol red medium
396 ++ ■ □
PR254/PR23



Carmine
318 ++ ■ □
PR23/PR254



Blossom
382 +++ ■ □
PW6/PR112



Pastel rose
390 +++ ■ □
PW6/PV19



Light rose
361 +++ ■ □
PW6/PV19



Rose
357 +++ ■ □
PW6/PV19



Quinacridone rose
366 +++ ■ □
PW6/PV19



Primary magenta
369 +++ □ □
PV19



Permanent red violet light
577 +++ ■ □
PV19/PW6



Permanent red violet
567 +++ ■ □
PV19/PV23



Pastel lilac
584 +++ ■ □
PW6/PV23



Pastel violet
579 +++ ■ □
PW6/PV23/PV19



Ultramarine violet light
519 +++ ■ □
PB29/PW6/PV19



Permanent blue violet
568 +++ ■ □
PV23



Pastel blue
580 +++ ■ □
PW6/PB29



King's blue
517 +++ ■ □
PB29/PW6



Cobalt blue (ultramarine)
512 +++ ■ □
PB29



Ultramarine
504 +++ □ □
PB29



Primary cyan
572 +++ ■ □
PB15/PW6



Phthalo blue
570 +++ □ □
PB15



Greyish blue
562 +++ ■ □
PB29/PBk7/PW6



Brilliant blue
564 +++ ■ □
PB15/PG7/PW6



Antique blue
563 +++ ■ □
PW6/PB15/PBk7



Sky blue light
551 +++ ■ □
PW6/PB15/PG7



Mint green
678 +++ ■ □
PW6/PG7/PB15



Phthalo green light
673 +++ ■ □
PW6/PG7



Turquoise green
661 +++ ■ □
PW6/PG7/PB15



Greenish yellow
243 ++ ■ □
PY3/PG7



Yellowish green
617 +++ ■ □
PG7/PY74



Permanent green light
618 +++ ■ □
PG7/PY74



Emerald green
615 +++ ■ □
PG7/PY74/PW6



Permanent green deep
619 +++ ■ □
PG7/PY74



Viridian
616 +++ □ □
PG7



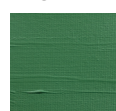
Sap green
623 +++ ■ □
PG7/PY42



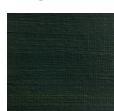
Pastel green
666 +++ ■ □
PW6/PG7/PY42/PY74



French green
648 +++ ■ □
PW6/PG7/PY42/PBk7



Leaf green
652 +++ ■ □
PY42/PG7



Olive green
620 ++ ■ □
PBk7/PY3



Yellow ochre
227 +++ ■ □
PY42



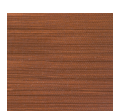
Raw sienna
234 +++ ■ □
PY42/PR101/PBk11



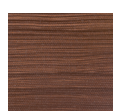
Red earth
436 +++ ■ □
PY42/PR101



Burnt sienna
411 +++ ■ □
PR101/PY42/PBk11



Burnt umber
409 +++ ■ □
PR101/PBk11/PY42



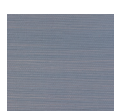
Vandyke brown
403 +++ ■ □
PR101/PBk11/PY42



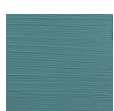
Greenish umber
410 +++ ■ □
PBk11/PY42



Warm grey
718 +++ ■ □
PBk11/PY42/PR101



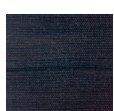
Neutral grey
710 +++ ■ □
PW6/PBk7/PY42



Sea grey
730 +++ ■ □
PW6/PBk11/PV23/
PB15



Payne's grey
708 +++ ■ □
PW6/PBk11/PV15/
PB15



Ivory black
701 +++ ■ □
PBk7



Silver
800 +++ ■ □
Coated Mica/PBk11



Gold
801 +++ ■ □
Coated Mica



Bronze
811 +++ ■ □
Coated Mica



Copper
805 +++ ■ □
Coated Mica



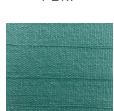
Metallic rose
833 +++ ■ □
Coated Mica/PR112/
PBk7



Metallic violet
835 +++ ■ □
Coated Mica/PV23/
PBk7



Metallic blue
834 +++ ■ □
Coated Mica/PB15/
PBk7



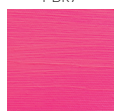
Metallic green
836 +++ ■ □
Coated Mica/PB15/
PY74/PBk7



Reflex yellow
256 ° □



Reflex orange
257 ° □



Reflex rose
384 ° □



Reflex green
672 ° □

Degree of lightfastness*

- +++ = at least 100 years lightfast
- ++ = 25 - 100 years lightfast
- + = 10 - 25 years lightfast
- ° = 0 - 10 years lightfast

*Under museum conditions.

The lightfastness has been tested in accordance with ASTM Standards D4303.

Transparency/opacity

- = opaque
- ▣ = semi-opaque
- ◻ = Semi-transparent
- = transparent

All colours are available in 75 ml and 200 ml tubes.
□ = also available in 750 ml jars.

PG7 = pigment(s) used